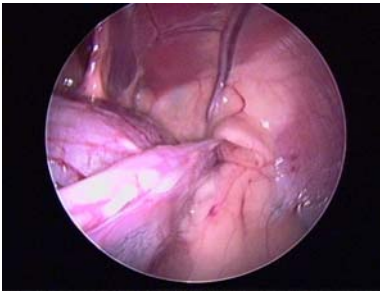




Canine transitional cell Carcinoma, seen through 2.7 mm telescope



Canine cryptorchid testicle, seen through 5.0 mm telescope



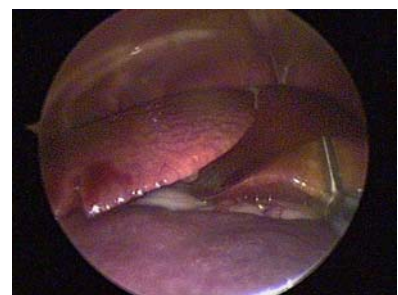
Canine pancreas biopsy, seen through 5.0 mm telescope



Canine liver cancer, seen through 2.7 mm laparoscope



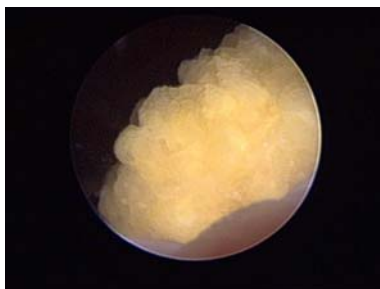
Canine kidney biopsy, seen through 5.0 mm telescope



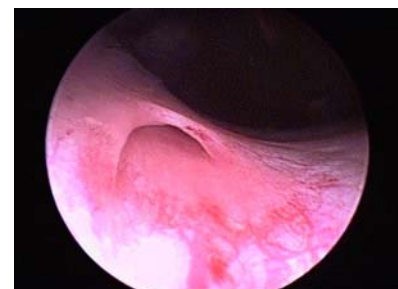
Canine liver biopsy, seen through 5.0 mm telescope



Female canine urethra, seen through 2.7 mm telescope



Canine urolith, seen through 2.7 mm telescope



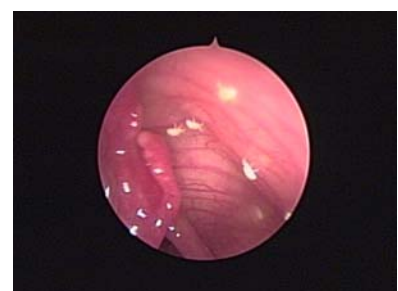
Canine ureteral opening, seen through 2.7 mm telescope



Canine nasal cancer, seen through 2.7 mm telescope



Canine rhinitis, seen through 2.7 mm telescope



Canine nasal mites, seen through 2.7 mm telescope